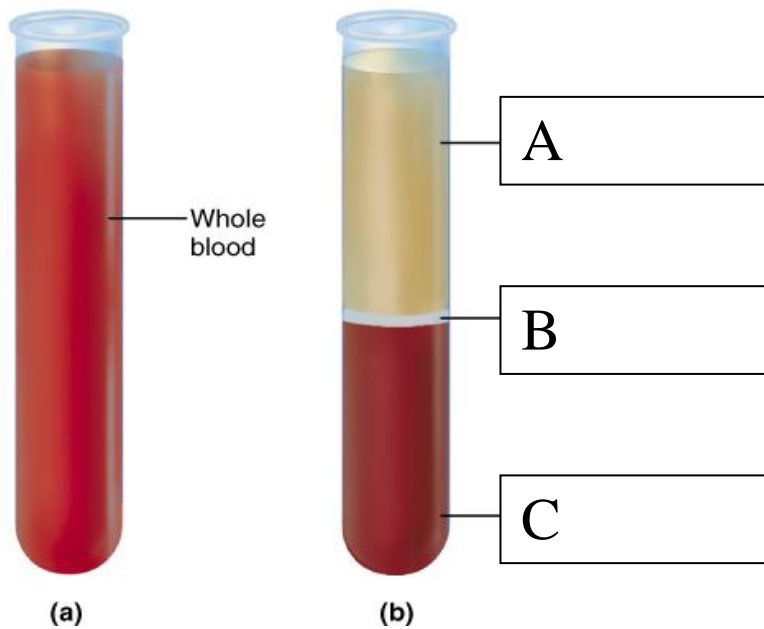


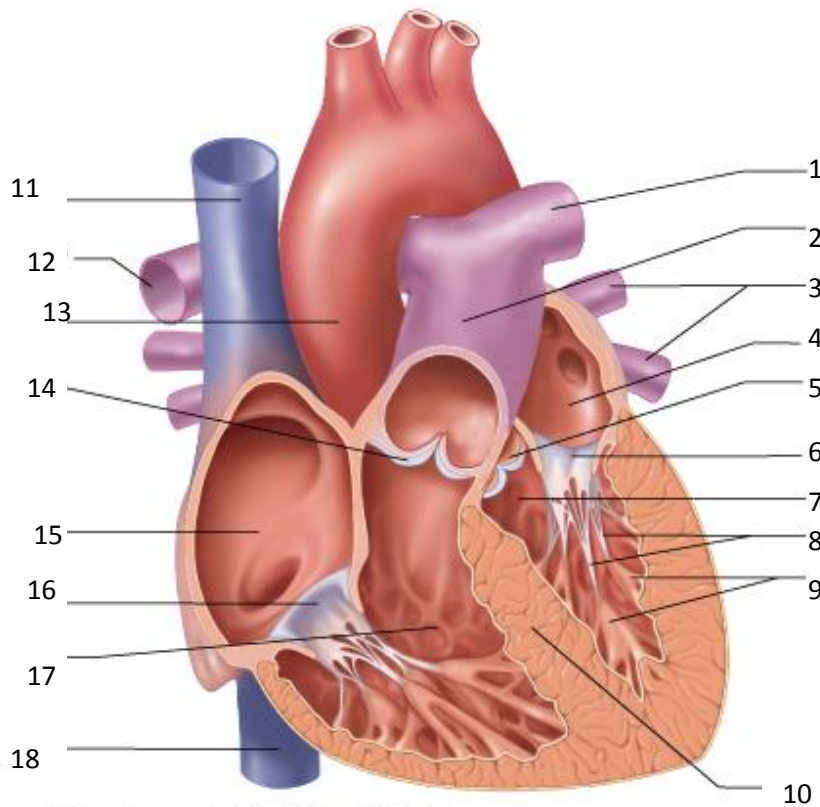
## Biology Department

A. Test tube (a) contains whole blood after keeping for some time it is seen as in test tube (b). Label A,B and C



- a. What are the components of A?
  
  
  
  
  
  
  
  
  
  
- b. What are the two main parts of B and what is their function?
  
  
  
  
  
  
  
  
  
  
- c. What is the components of the formed element C?

### B. Label the internal structure of heart



Copyright © 2001 Benjamin Cummings, an imprint of Addison Wesley Longman, Inc.

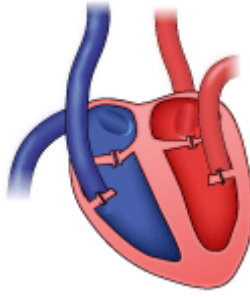
1. What is the function of structure 8?
2. What is present on structure 10 that helps the heart to beat?
3. What is the difference between the structure 6 and 16?
4. Blood in structure 13 needs to be pumped with more pressure than in structure 2. Why?
5. What is the difference between the structures of branches of 13 and structure 3?
6. The heart beat is initiated by a structure in the heart. Name and give its location.

C. Name the layers of the pericardium.

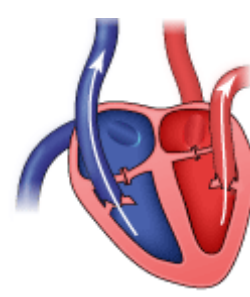
D. Given below are diagrams of the structure of heart during the cardiac cycle. Identify A, B and C. and arrange them in their proper sequence.



A



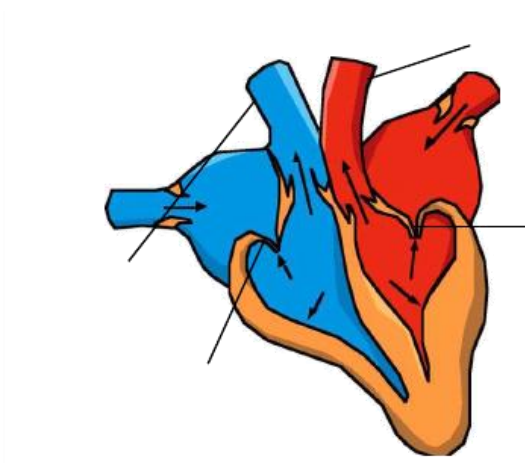
B



C

<http://www.beltina.org/health-dictionary/cardiac-cycle-phases-diagram-definition.html>

E. Identify and give the features of the given stage.



F. What is the stage after this? Give its features.

G. Draw the external structure of heart.

H. Identify the structure, label the parts and give the features of each.

