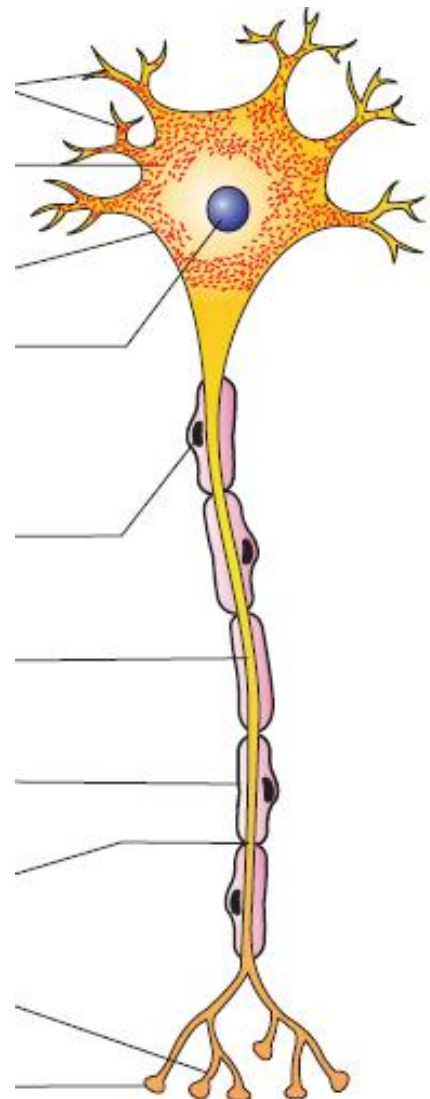


NAME: \_\_\_\_\_

DATE: \_\_\_\_\_

STIMULUS	RESPONSE

Label the structure-

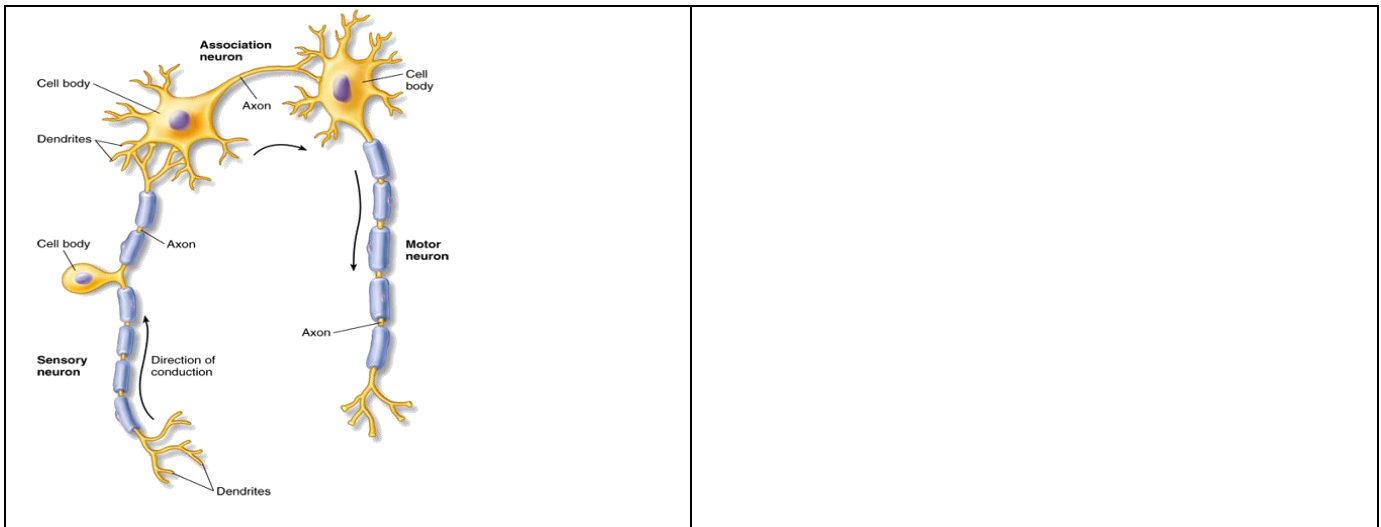


GREY MATTER	WHITE MATTER

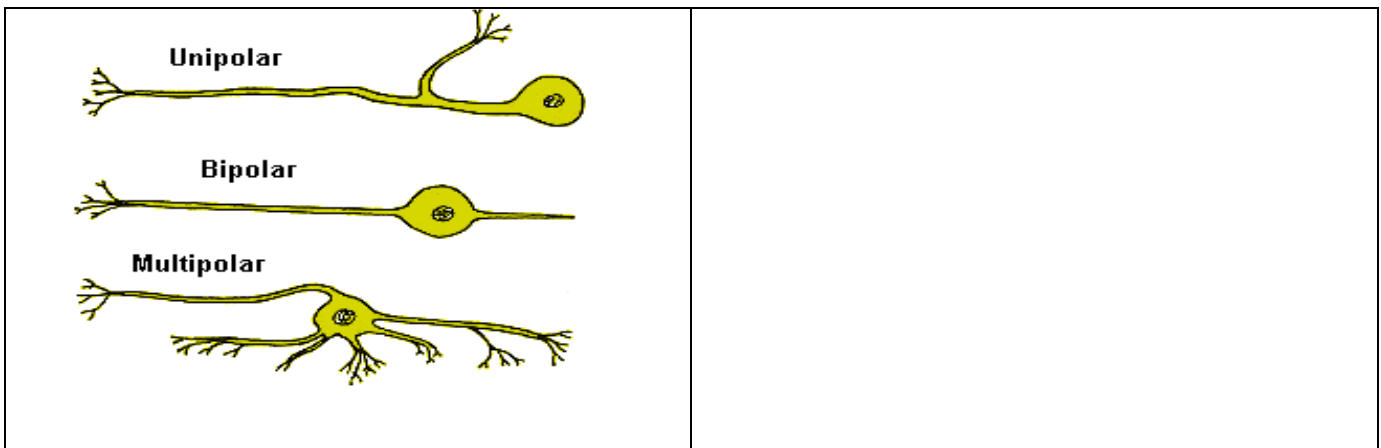
NERVE	NEURON

Types of neuron –

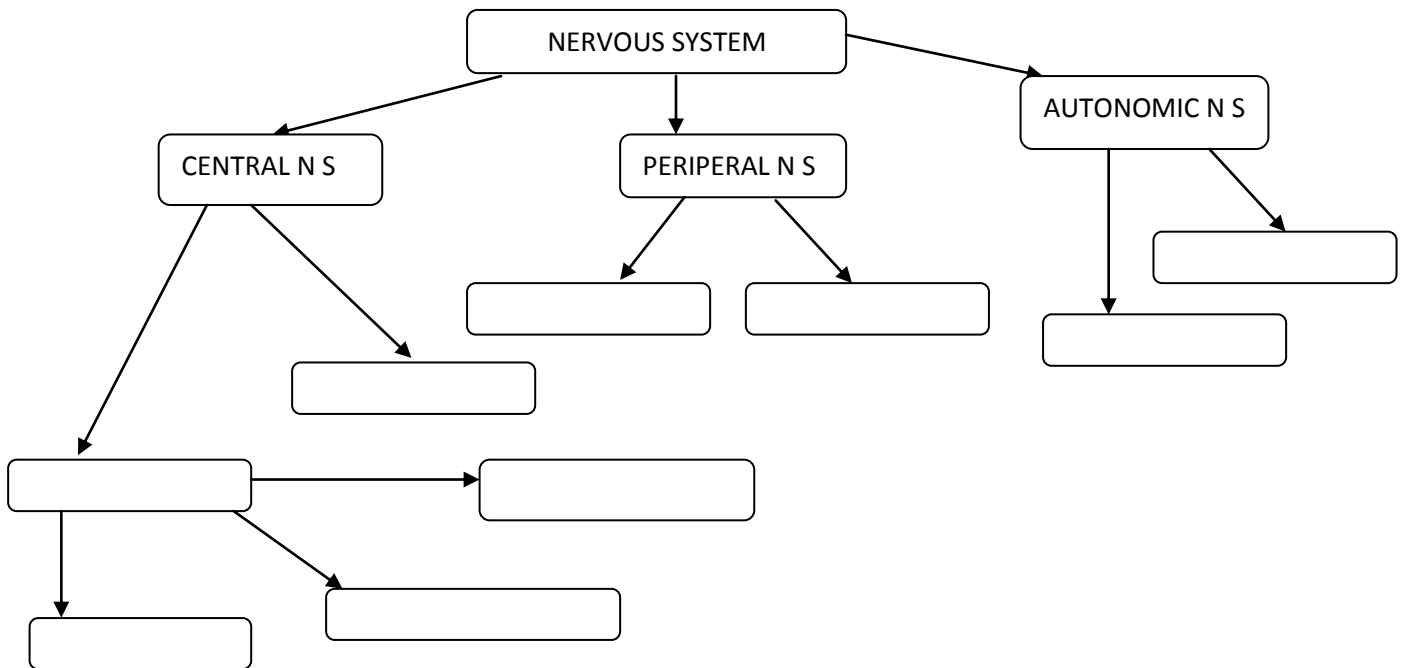
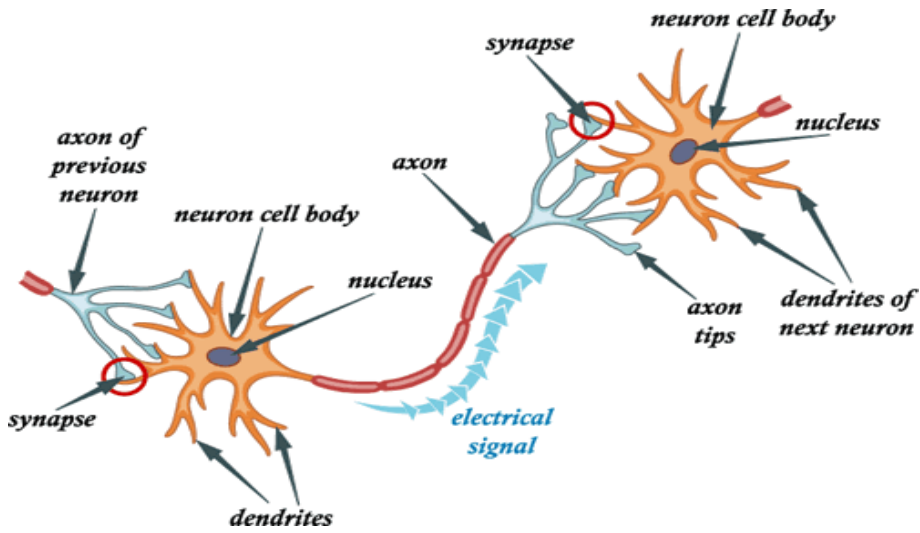
Based on function

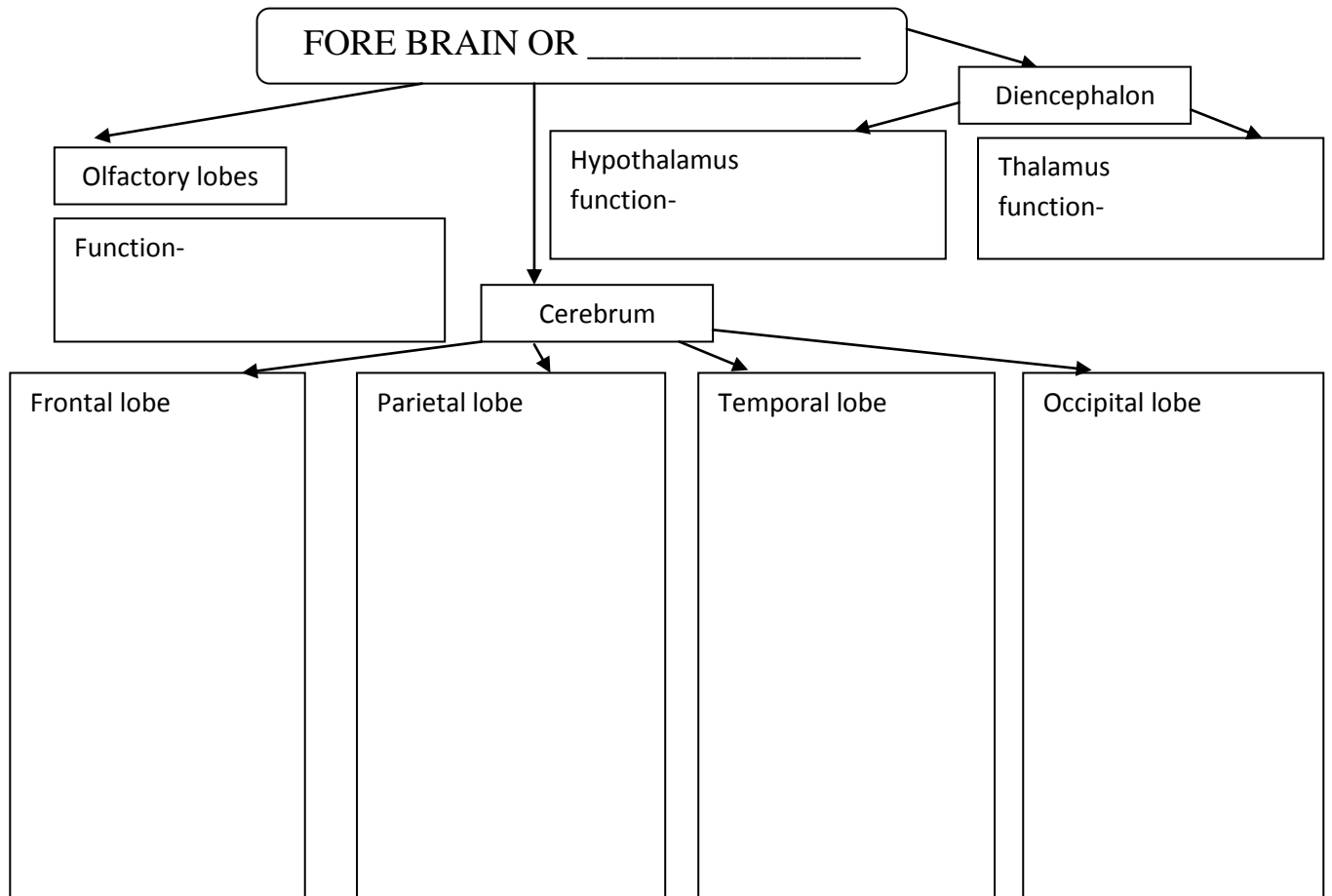
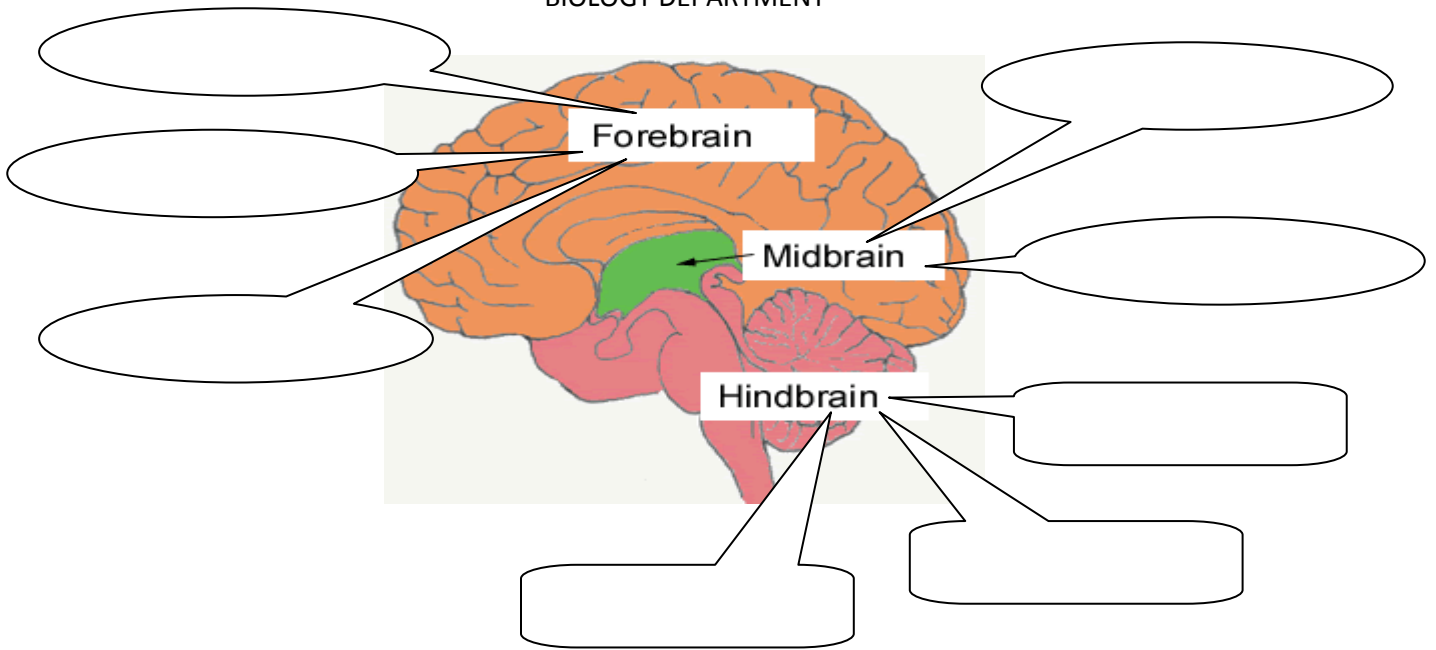


Based on the structure-



Transmission of nerve impulse-





MID BRAIN OR \_\_\_\_\_

Optic lobes

Cerebral peduncles

HIND BRAIN OR \_\_\_\_\_

Cerebellum

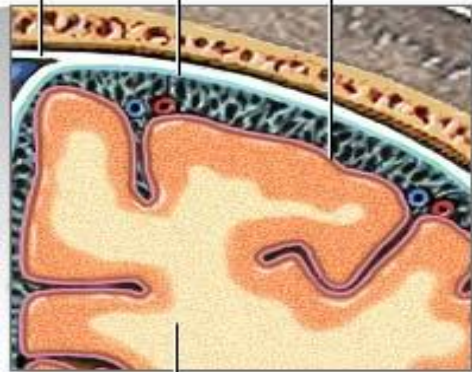
Pons varoli

Medulla oblongata

Dura mater (2 layers)

Arachnoid

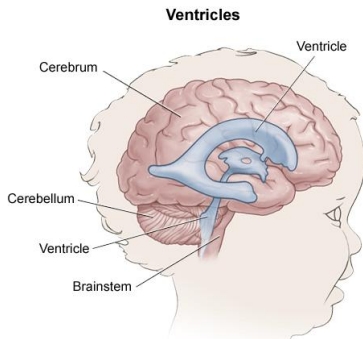
Pia mater



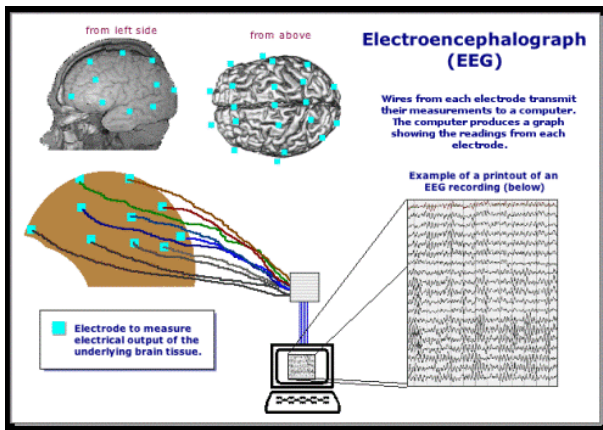
Brain

Meninges-

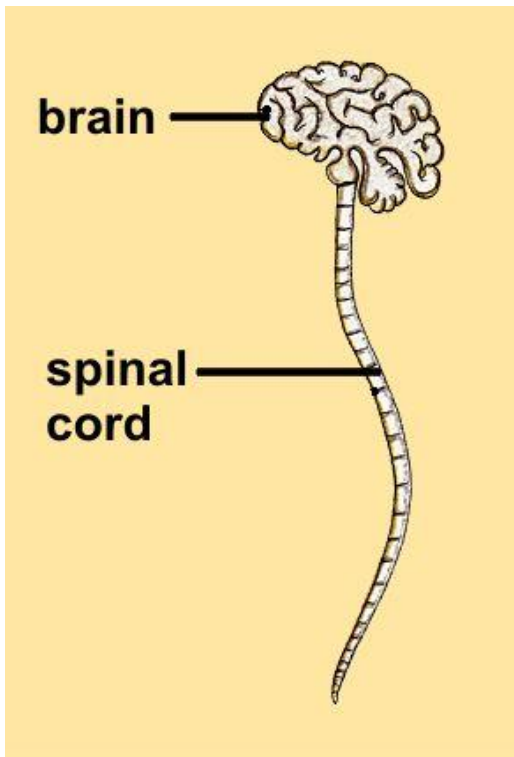
ADAM.



Ventricles and CSF



Spinal cord



T.S.of spinal cord

Reflex arc and reflex action

Parts of the reflex arc-

Types of reflexes

Unconditional reflex	Conditional reflex

Peripheral nervous system



Afferent nerve

Efferent nerve

Motor nerve



Autonomic nervous system

