

S.N.KANSAGRA SCHOOL

BIOLOGY DEPARTMENT

1. Identify figure. 1.1 _____ and label parts A and B

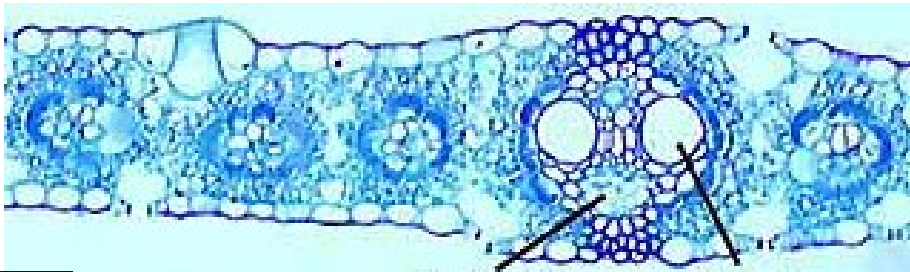


Fig. 1.1

A. _____

B. _____

a. State two characters that are specific to this structure.

2. The given figure 2.1 is a section of the stem. Identify the stem _____

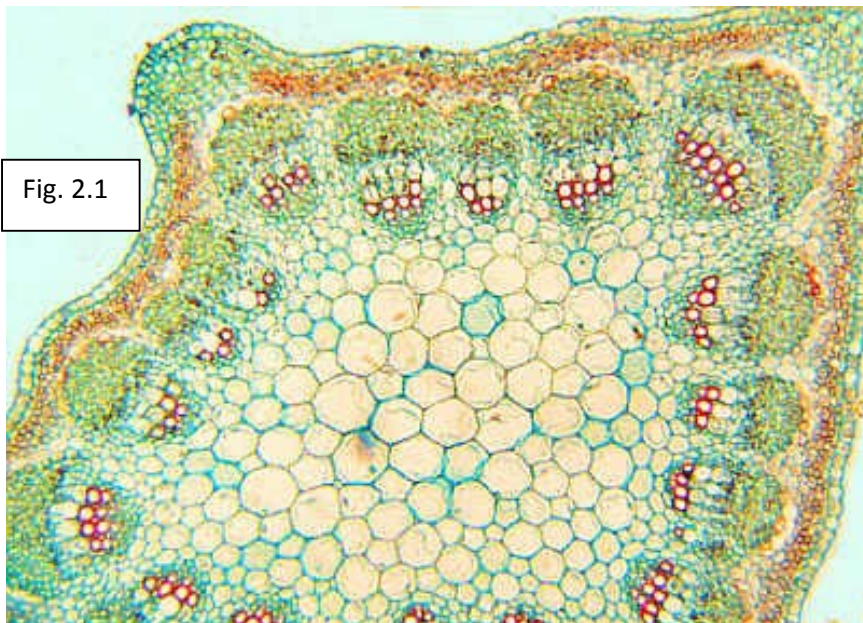


Fig. 2.1

a. In the figure 2.1 label xylem, phloem and medullary rays.

b. Label areas that have parenchyma cells as P, sclerenchyma cells as S.

S.N.KANSAGRA SCHOOL

BIOLOGY DEPARTMENT

3. Identify the figure 3.1 A and B and give two morphological and anatomical differences.

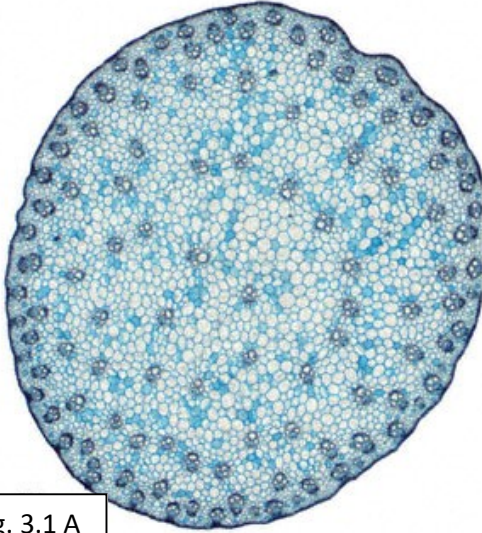


Fig. 3.1 A

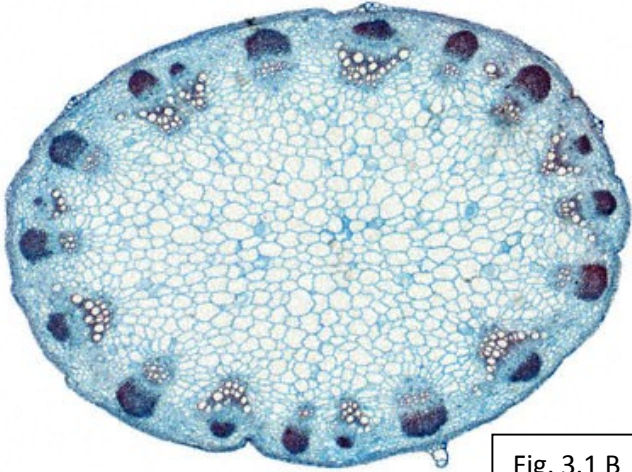


Fig. 3.1 B

a. List the layers that are seen figure 3.1 and name the type of tissues in each.

4. Identify the figure 4.1 _____

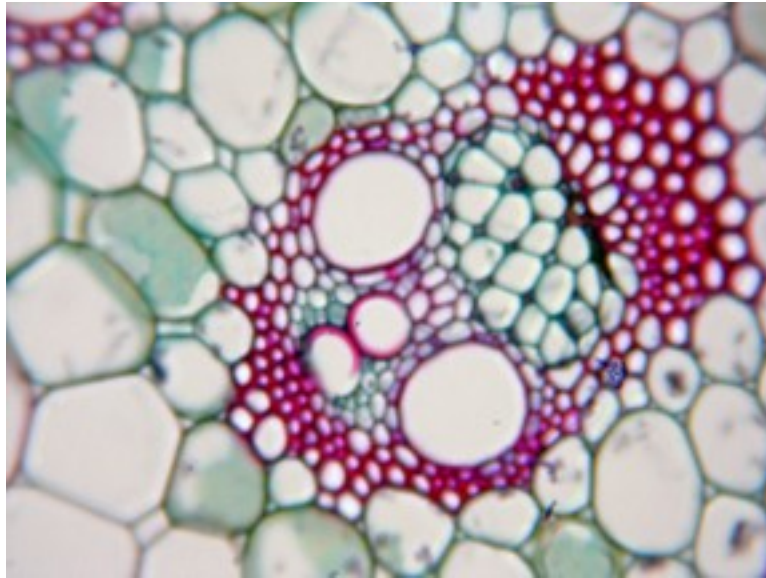


Fig. 4.1

a. Label the following xylem, phloem, sclerenchyma patch.

5. Identify figure 5.1

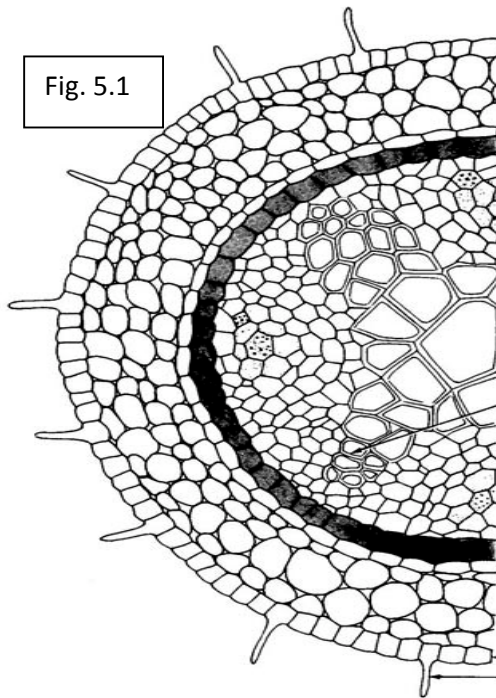


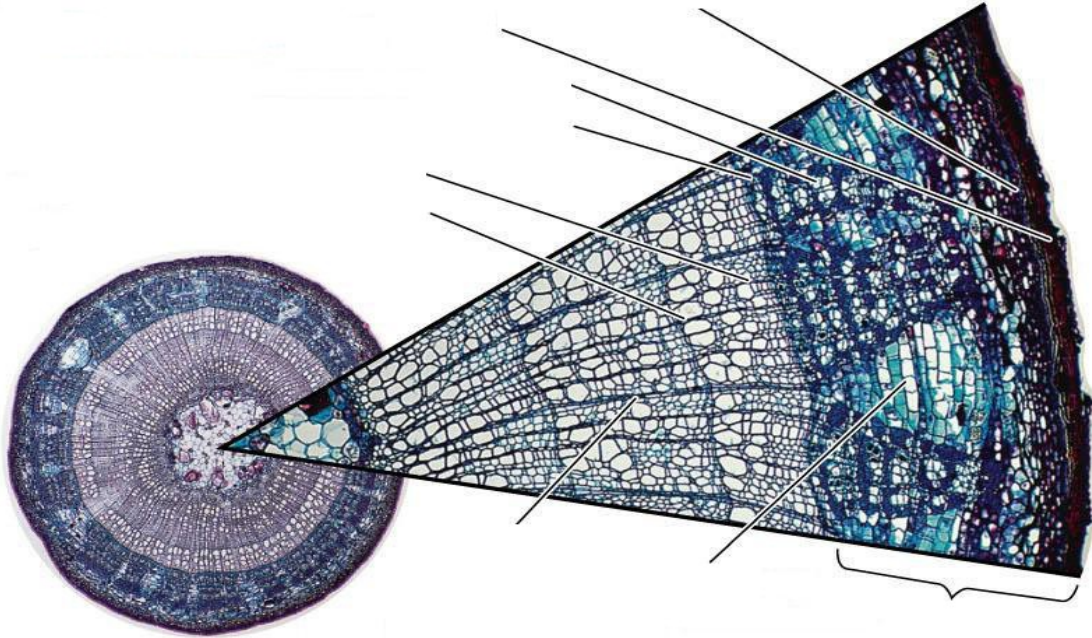
Fig. 5.1

a. Label epidermis, cortex, phloem, conjunctive tissue, protoxylem and metaxylem

S.N.KANSAGRA SCHOOL

BIOLOGY DEPARTMENT

6. Given figure is of secondary growth in stem label the figure.



Copyright © Pearson Education, Inc., publishing as Benjamin Cummings.

a. List the stages in secondary growth.