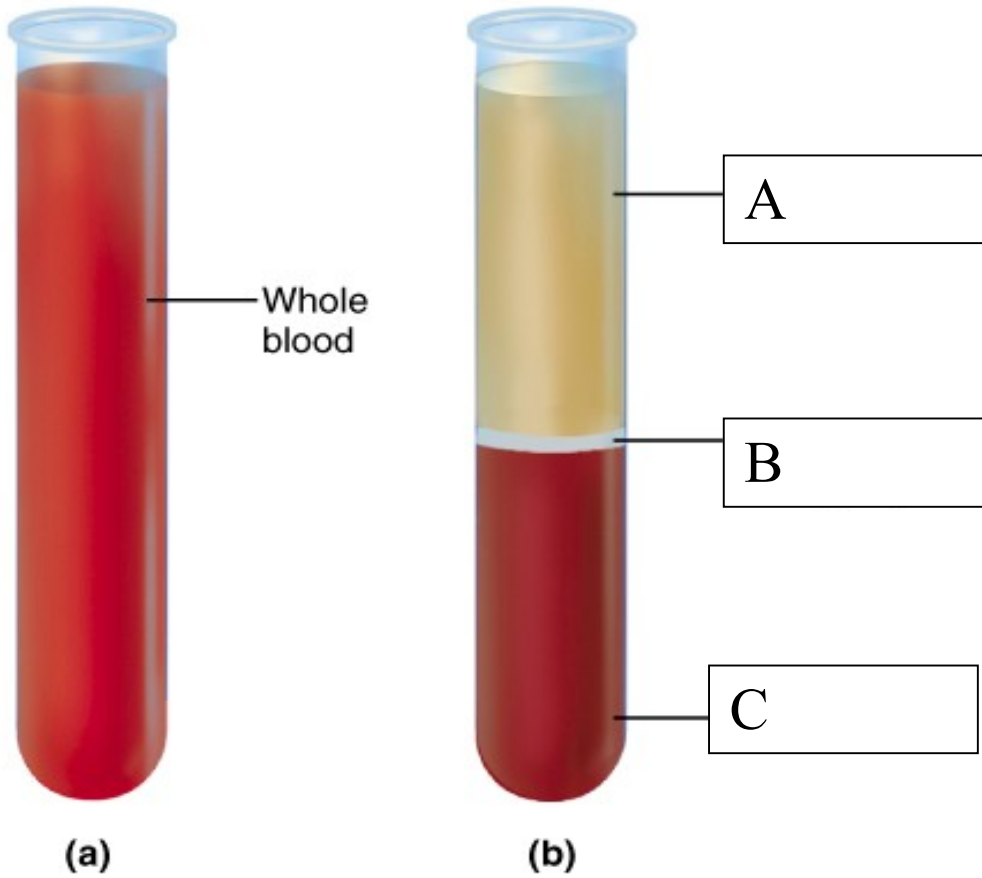


# S. N.KANSAGRA SCHOOL

## BIOLOGY DEPARTMENT

A. Test tube (a) contains whole after keeping for some time it is seen as in test tube (b).

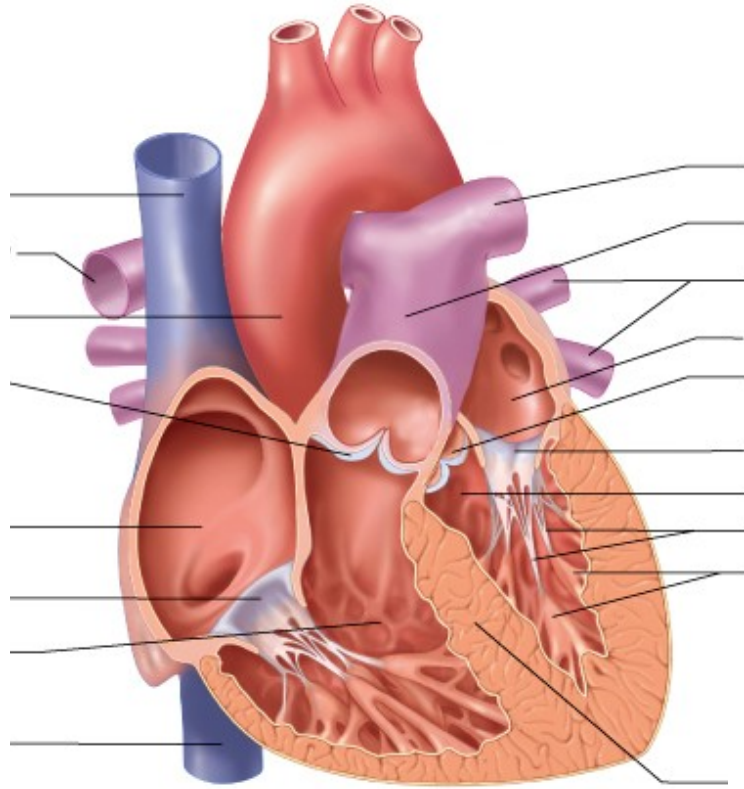


- Label A, B and C.
- What are the components of A?
- What are the two main parts of B and what is their function?
- What is the importance of the formed element in C?

# S. N.KANSAGRA SCHOOL

## BIOLOGY DEPARTMENT

B. Label the internal structure of heart



Copyright © 2001 Benjamin Cummings, an imprint of Addison Wesley Longman, Inc.

Fossa ovalis	Foramen ovale

C. Name the layers of the pericardium.

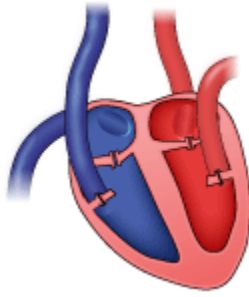
# S. N.KANSAGRA SCHOOL

## BIOLOGY DEPARTMENT

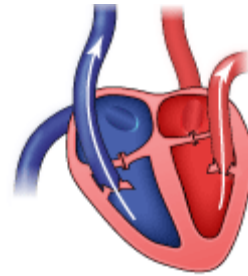
D. Given below are diagrams of the structure of heart during the cardiac cycle. Identify A, B and C. and arrange them in their proper sequence.



A



B



C

<http://www.beltina.org/health-dictionary/cardiac-cycle-phases-diagram-definition.html>

a. Describe the flow of blood during the stages of cardiac cycle.