

Name: \_\_\_\_\_

date: \_\_\_\_\_

List the protective parts of the eye-

Functions of lacrimal gland-

Label the following-

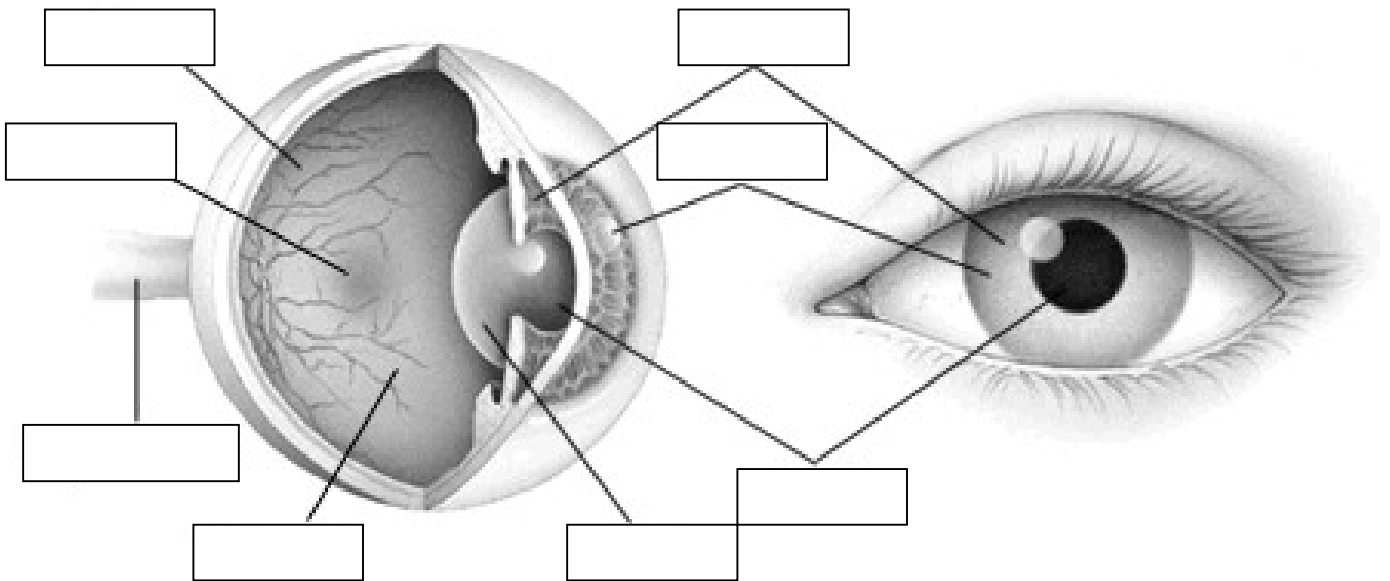
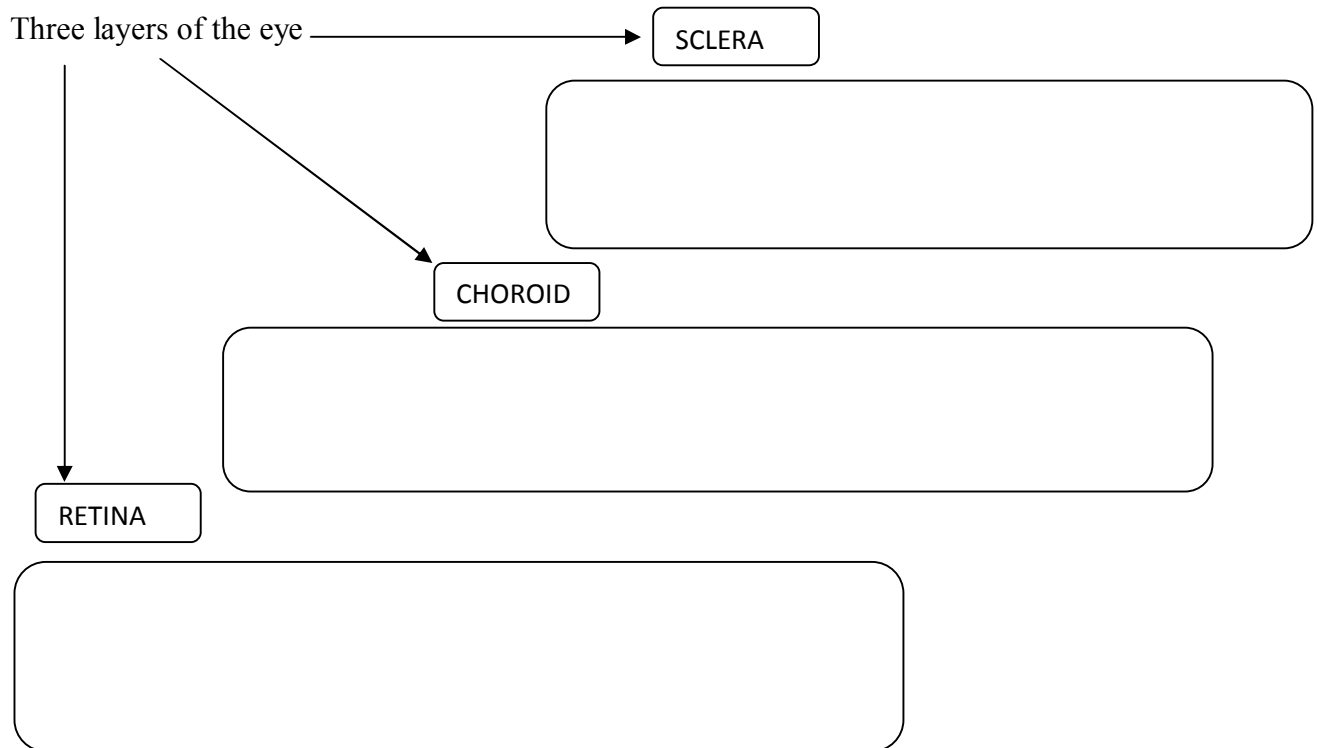




Diagram of eye



# S.N.KANSAGRA SCHOOL

## BIOLOGY DEPARTMENT

 <p>Undilated Pupil</p>	 <p>Dilated Pupil</p>

RODS	CONES

Yellow spot	Blind spot

Accommodation of eye	Adaptation of eye

Myopia	Hypermetropia

# S.N.KANSAGRA SCHOOL

## BIOLOGY DEPARTMENT

Explain the following-

- a. Astigmatism
  
- b. Presbyopia
  
- c. Cataract

Night blindness	colourblindness

Fill in the blanks-

- 1. The ability to alter the thickness of the crystalline lens.
- 2. These are the light sensitive receptors of the retina.
- 3. Red coloured chemical substance found in rods ( cells of retina)
- 4. Vitamin whose deficiency causes night –blindness.
- 5. Three primary colours to which cone cells are sensitive.
- 6. An inheritable disease of vision.