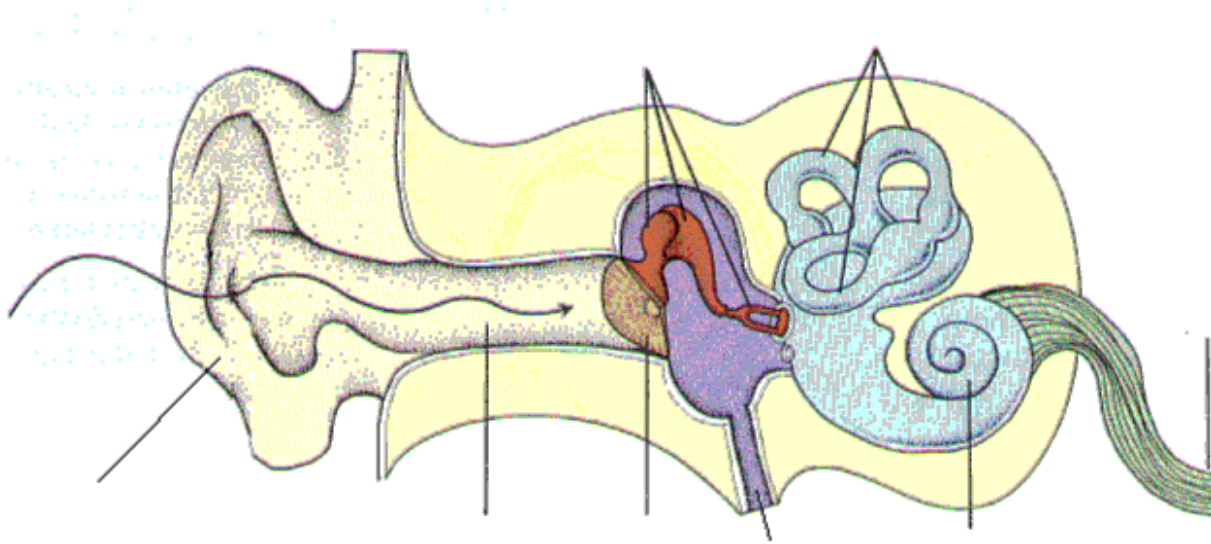


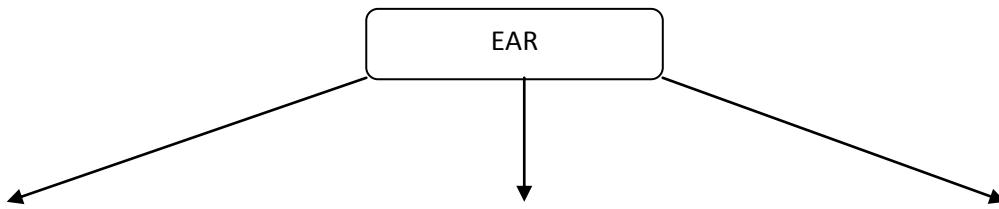
Name _____

date: _____

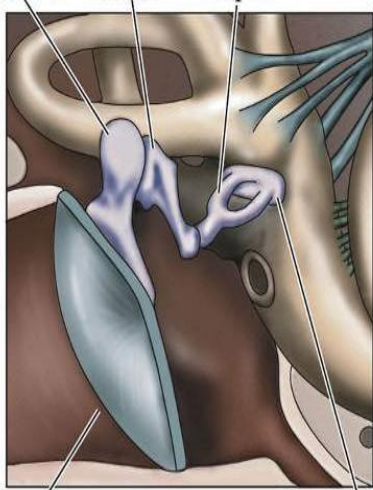
Ear- label the parts



Complete the chart



MIDDLE EAR- label the ear ossicles and give the other name of each

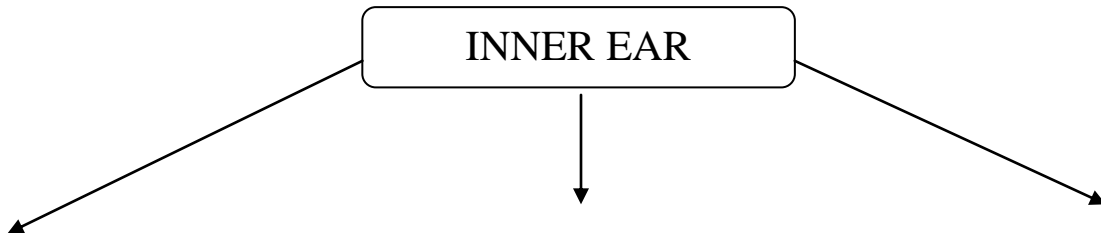


Tympanic membrane

Base of stapes in oval window

Bony labyrinth	Membranous labyrinth

complete and write the functions



Draw the cross section of cochlea

1. Three small bones present in the middle ear.
2. The sensory cells conducting the impulses to the auditory nerve.
3. Part of inner ear concerned with the sense of balance.
4. The fluid present inside the membranous labyrinth.

Choose the correct one:

1. White matter is made up of
 - a. Nerve cells
 - b. Ependymal cells
 - c. Nerve fibres
 - d. None of these.
2. Grey matter is composed of
 - a. Ependymal cells
 - b. Nerve fibres
 - c. Nerve cells
 - d. Nissil granules
3. Brain stem is formed by the union of
 - a. Optic lobes
 - b. Cerebellum with optic lobes.

S.N.KANSAGRA SCHOOL

BIOLOGY DEPARTMENT

- b. Corpora striata
d. None of the above.
4. Number of spinal nerves in man are
- a. 11
c. 12
- b. 13
d. 31
5. Which one is not a reflex action?
- a. Closing eyelids suddenly
c. Release of saliva
- b. Obeying orders
d. None of these
6. Acetylcholine is the secretion of _____
- a. Sympathetic nervous system
c. Pituitary
- b. Parasympathetic nervous system
d. Cerebrum
7. Cerebral hemispheres are centres of _____
- a. Taste
c. Thinking
- b. Smell
d. All of these
8. Myelin sheath is the covering of
- a. Muscle cells
c. Blood vessels
- b. Axons
d. Osteocytes
9. More than one foot long cells of this body are
- a. Gland cell
c. muscle cells
- b. Bone cell
d. Nerve cell
10. The largest part of the brain
- a. Medulla
c. Cerebrum
- b. Fornix
d. optic lobe