



<http://tgesbiology.weebly.com/6-kingdom-animalia.html>

# ANIMAL KINGDOM- chordates

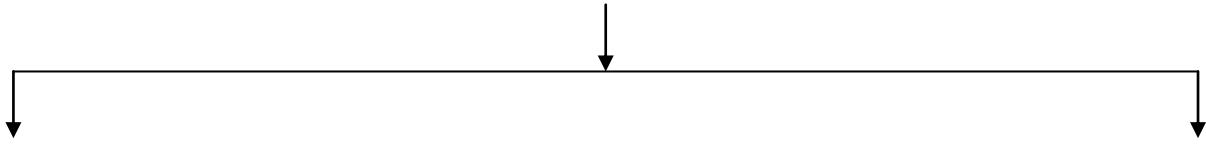
UNIT 1 CHAPTER 6

NAME \_\_\_\_\_

DATE: \_\_\_\_\_

Complete the classification

PHYLUM CHORDATA



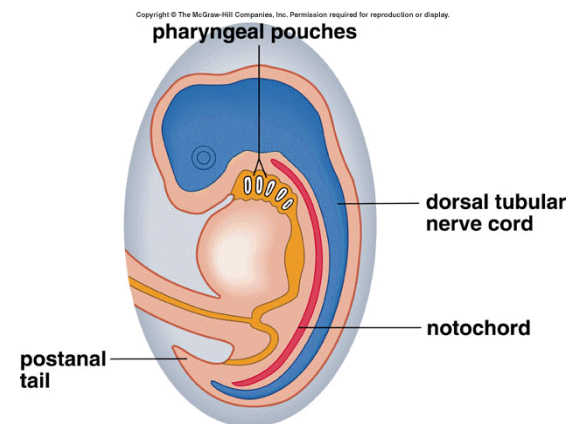
## PHYLUM HEMICHORDATA

Features of Hemichordata:



Give the three basic features of chordata:

What do you mean by notochord?



Mention the features of chordates.

## **SUBPHYLUM UROCHORDATA**

Features of Urochordates



## **SUBPHYLUM CEPHALOCHORDATES**

Features of cephalochordates.



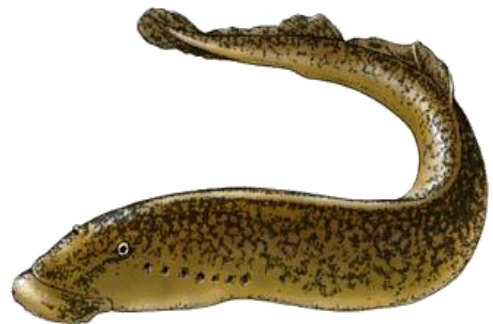
## **SUBPHYLUM VERTEBRATA**

Features of vertebrata

Name the sections into which the subphylum vertebrate is divided and the features of each.

### **CLASS CYCLOSTOMATA**

Features of cyclostomata



What are the divisions of Gnathostomata? Give its features.

## CLASS CHONDRICHTHYES

Features of Chondrichthyes



## CLASS OSTEICHTHYES

Features of osteichthyes





Bony fishes	Cartilaginous fishes

Give the features of Tetrapoda and its divisions.

### CLASS AMPHIBIA

Features of class Amphibia





## CLASS REPTILIA

### Features of Reptilia

What character of reptiles allowed them to be true land vertebrates?

 <p>A photograph of a sea turtle resting on a dark, rocky shore. The turtle's shell is dark with lighter, patterned scutes. Its head and front flippers are visible. A small copyright notice "© Wade Gupta" is visible in the bottom right corner of the image.</p>	 <p>A photograph of a large tortoise, likely a Galapagos tortoise, in a natural, grassy environment. The tortoise is facing right, and several birds are visible in the foreground. A palm tree trunk is visible in the background.</p>



## **CLASS AVES**

Features of Aves:

Name the flightless birds.

## **CLASS MAMMALIA**

Features of mammalia

What are the subclasses of mammalia?